

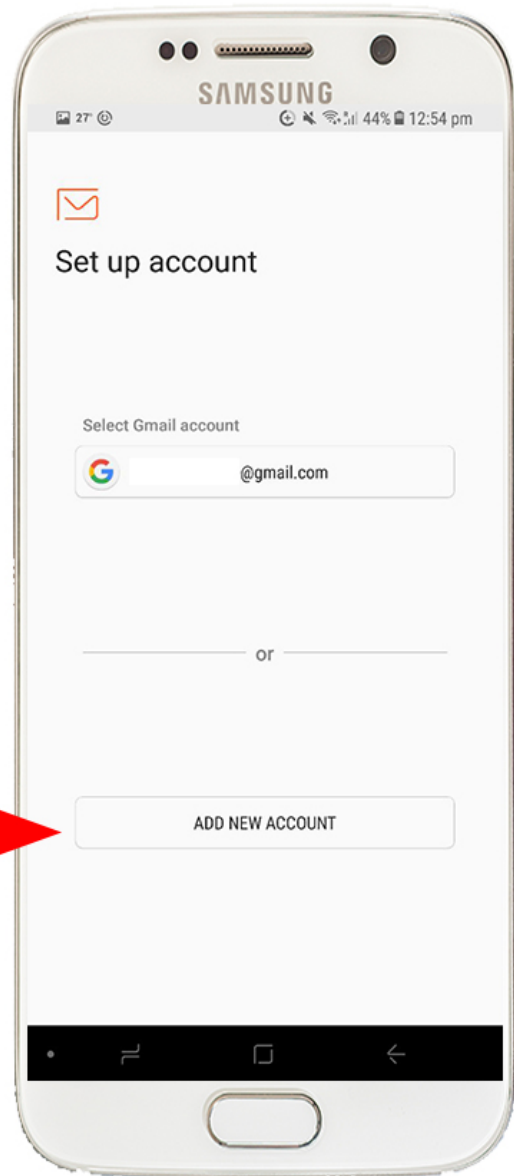


Important Please Keep Me!

HOW TO SET UP YOUR EMAIL ON YOUR ANDROID

Version 1.01

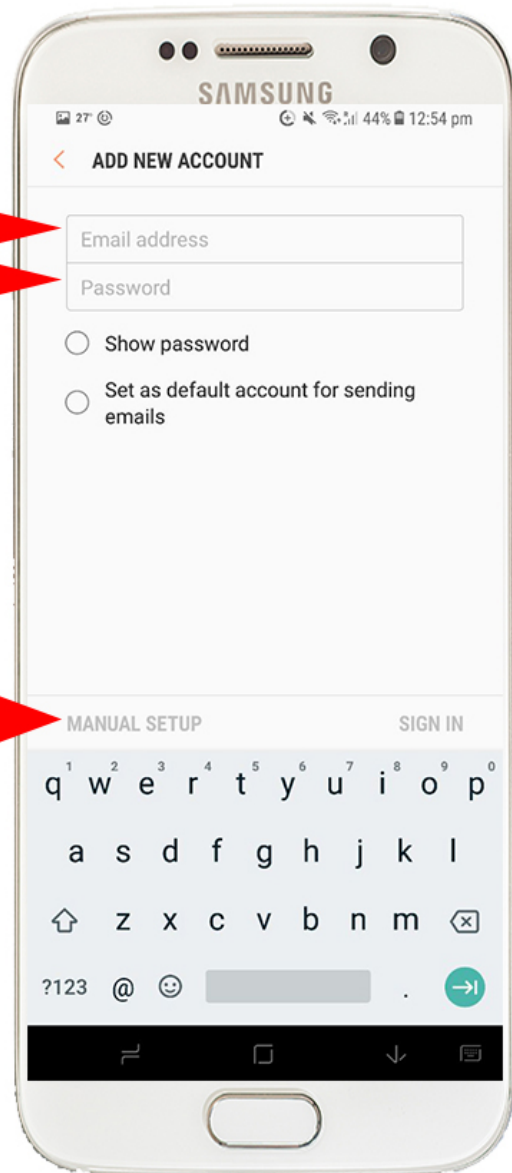
**CLICK
HERE**



**EMAIL
PASSWORD**



CLICK MANUAL SET UP



The screenshot shows the 'SERVER SETTINGS' screen for an email account. Red arrows point from labels on the left to specific fields on the right:

- email address** points to the 'Email address' field (youremailhere@engd.com).
- email address** points to the 'Username' field (youremailhere@engd.com).
- password** points to the 'Password' field (masked with dots).
- incoming mail server** points to the 'POP3 server' field (mail.entertthewifi.com).
- TLS is preferred** points to the 'Security type' dropdown (TLS (Accept all certificates)).
- TLS /SSL PORT** points to the 'Port' field (110).
- this is down to your preference** points to the 'Delete Email from server' dropdown (Never).
- outgoing mail server** points to the 'SMTP server' field (mail.entertthewifi.com).
- TLS is preferred** points to the 'Security type' dropdown (TLS (Accept all certificates)).
- TLS /SSL PORT** points to the 'Port' field (587).
- Authentication required before sending emails** points to the toggle switch (turned on).
- email address** points to the 'User name' field (youremailhere@engd.com).
- password** points to the 'Password' field (masked with dots).

A 'DONE' button is visible at the bottom of the settings screen.